

2026 Mahoning County Junior Fair Poultry Record Book

This book must be completed for EACH project that you are taking

Name: _____

Date of Birth: _____

4-H Age: _____

Club Name: _____

Advisor's name: _____

Project (please circle one):

Market Broiler	Market Duck	Market Turkey	Pullet
Fancy Chicken	Fancy Duck	Fancy Turkey	Fancy Goose

Number of Years in Project: _____

I hereby certify that as the 4-H member of this project, I have personally been responsible for the care of this animal, record keeping, and have completed this record book.

Youth Signature: _____ Date: _____

I, as the parent or guardian, certify that my child has completed this project and record book, and will comply with all rules and regulations.

Parent/Guardian Signature: _____ Date: _____

This book has been created through a combination of the following resources:
Ohio State 4-H Poultry Record Book
Trumbull County 4-H Poultry Materials
Coshocton County 4-H Poultry Materials

Note to the Project Helper

Thank you for supporting a 4-H member in their project! As a project helper, you may be a parent, family member, advisor, or another trusted adult. Your role begins with helping the member plan their project and continues as you guide them through each step.

You will support the youth by helping them stay focused, offering feedback, and encouraging reflection on what worked well, what could be improved, and what to try next.

Your involvement plays an important role in building the member's skills, confidence, and understanding of poultry and livestock care.

Your Role as a Project Helper

Project helpers are essential to the success of the 4-H program, which aims to provide meaningful experiences that help young people grow. Your interactions should support positive youth development by focusing on these key elements:

- Building strong, supportive relationships with youth
- Creating an inclusive and welcoming environment
- Encouraging service and community involvement
- Supporting skill development and achievement
- Promoting a safe physical and emotional space
- Allowing youth to make choices and take ownership
- Keeping youth actively engaged in learning

In practice, this means you will:

- Help the member set goals and work toward completing their project
- Encourage them to apply what they learn from the record book
- Serve as a source of knowledge and support
- Motivate them to explore beyond the project and continue learning about poultry

Member Project Guide

Thank you for choosing a poultry project! Whether this is your first experience or you've worked with poultry before, this record book is designed to help you learn how to properly care for and manage your birds. It can be used by 4-H members of any age and applies to projects involving chickens, ducks, geese, turkeys, or guinea fowl. A new record book should be completed each year and for each project. Be sure to review your county's specific project requirements, especially if you plan to exhibit at a fair. If you are interested in showing at the Ohio State Fair, check their website for details about record book expectations, skillathon participation, and opportunities such as outstanding exhibitor competitions.

Project Guidelines

To successfully complete this book, it's important to understand its purpose. This record book serves as a detailed log of your project, including care practices, feeding routines, and the costs associated with raising your animals. Before you begin, take time to look through each section so you understand what information is required. Many sections are meant to be completed over time and you start them early, update them as your project progresses, and finish them at the end.

Start with these sections:

- Member project guide
- Goals and accomplishments
- Animal care and quality assurance
- Beginning project photo
- Animal inventory
- Equipment inventory
- Average daily gain (for market projects)

As your project continues, return to the book regularly to update your records. For example, document learning experiences when completed, and record any treatments or medications given to your animals, including their cost.

Ongoing records include:

- Feed labels and receipts
- Weight tracking (for market animals)
- Feed expenses
- Supply and other costs
- Additional income
- Earnings from project animals

At the end of your project (before the fair), complete:

- Final project photo
- Weight summary and feed efficiency (market projects)
- Profit or loss statement
- Project summary

Project Records

All levels complete

All record pages should be completed by the member using up-to-date and accurate information, unless a section does not apply to your project. After finishing each record, review it with your project helper, then have them add their initials and the date to confirm it has been completed.

Record	Date Completed	Project Helper Initials
Learning Experiences		
Leadership Activities		
Goals		
Assuring Quality Care		
Project Pictures		
Feed Tag AND Receipt		
Animal Care Treatment Records		
Weight Record and Summary (market)		
Animal and Equipment Inventory		
Feed and Supply Expenses		
Miscellaneous and Project Animal Income		
Profit/Loss Statement		
Reading a Feed Tag		
Comb and Egg Parts		
Wing and External Anatomy		
Digestive/Skeletal System (if required)		
Junior Questions and Activities		
Intermediate Questions and Activities		
Senior Questions and Activities		
Project Summary		

Learning Experiences

All levels complete

Learning experiences are designed to enhance your project by giving you chances to explore topics that interest you in more depth. Think about ways you can demonstrate what you're learning and expand your knowledge.

Some ideas include:

- Attend a poultry-related clinic, workshop, presentation, or demonstration
- Help plan or lead a club meeting connected to your project
- Participate in a field trip or tour related to poultry
- Create and present your own demonstration, illustrated talk, or exhibit
- Take part in county-level judging events

Choose **at least two** learning experiences and list them in the table below. As you complete each one, record the date and have your project helper initial to show it has been finished.

Learning Experience	Date Completed	Project Helper Initials
<i>Showed club members how to handle a chicken for showing</i>	6/12/26	L.M.

Leadership and Citizenship Activities

All projects complete

Select **at least two** leadership or citizenship activities from the list below, or come up with your own ideas and record them in the table provided. Track your progress by having your project helper add their initials and the date once each activity is finished. You can update or change your activities at any time.

Examples of leadership/citizenship activities:

- Show someone how to care for or manage poultry
- Assist another member in getting ready for project judging
- Organize a workshop to demonstrate showmanship skills
- Motivate others to join a poultry project
- Invite a breeder or industry professional to speak to your club
- Design and complete your own leadership or service activity

Leadership/Citizenship Activity	Date Completed	Project Helper Initials
<i>Arranged for a supplier to speak to our club</i>	<i>6/12/26</i>	<i>L.M.</i>

Goals and accomplishments

All projects complete

Setting goals is an important part of any 4-H project. Goals help explain why you chose the project and what you hope to accomplish while raising your animal. If you continue the project in future years, you may reuse or revise your goals.

Choose **at least three goals** from a provided list or create your own. Mark your selected goals in the "planned" column. As you complete each goal, record the date and have a parent or project helper initial it.

Plan to Do (Goal)	Planned	Date Completed	Project Helper Initials
Observe and care for my project animals daily			
Learn more about basic requirements (food, water, shelter) through the project resource manual, other reputable resources, and/or knowledgeable person			
Learn more about desirable characteristics for my project bird that judges look for at a show			
Select my own project bird based on desirable characteristics for the species, breed, variety			
Learn more about how to condition and groom poultry for show			
Do a demonstration related to my project at a club meeting			
For showmanship, begin handling my bird at home 3-5 weeks before my 1st show			
Help a younger or less experienced member taking the poultry project Member name:			
Attempt to make a profit on my poultry when sold at market price			
Complete my own fair entries and DUNF			
Weigh market poultry projects regularly to monitor weight gain and compare to final goal weight			
Learn a new poultry management skill List:			

Assuring Quality Care for Animals

Providing high-quality care for animals involves combining state-required youth livestock assurance programs with proper animal handling, health management, and welfare practices.

10 Key Production Practices

The Ohio 4-H program includes the following 10 Good Production Practices (GPPs) as an essential part of youth livestock education. These practices focus on three main priorities: keeping youth participants safe, ensuring animals receive excellent care, and maintaining the safety of animals that enter the food supply.

Read through the practices below and respond to the questions that follow.

1. Work with a Veterinarian (VCPR)

- Develop a working relationship with a veterinarian to guide decisions about your animal's health and medication use.
- Plan ahead by choosing a veterinarian before an emergency or illness occurs so you can act quickly when needed.

2. Create a Health Management Plan

- Understand the needs of your animal before bringing it home.
- Use reliable resources or consult experienced individuals for guidance.
- Caring for livestock requires both time and financial commitment. Consider all costs in advance.
- Daily monitoring and care are required. If your animal is housed elsewhere, make sure you or a trusted helper can consistently meet its needs. Youth participants should play an active role in everyday care.

3. Use Antibiotics Responsibly

- Follow veterinary guidance when deciding if antibiotics are necessary.
- Keep accurate records of all treatments, including medicated feed.

4. Store and Administer Health Products Correctly

- Always read and follow label directions for storing and using medications.
- Learn proper administration techniques or ask a knowledgeable person for help when needed.

5. Follow Proper Feeding Practices

- Ensure animals always have access to clean water.
- Provide feed that matches the animal's species, age, and purpose.
- Store feed in a clean, dry area protected from pests.
- Prevent cross-contamination, especially when using medicated feeds.

6. Keep Identification and Treatment Records

- Maintain clear identification for each animal and keep detailed health records.
- Required records should be kept for at least one year after the project ends.
- You may use additional notebooks or digital tools if desired.

7. Care for the Environment

- Have a plan for managing manure and waste.
- Know and follow local guidelines for handling deceased animals.

8. Promote a Safe Working Environment

- Practice safe animal handling at all times.
- Prepare for emergencies such as severe weather or fire, especially if animals are housed off-site.
- Keep the facility address easily accessible in case of emergency.

9. Support Animal Well-Being

- Observe animals daily, noting behavior, appetite, and overall condition.
- Understanding normal behavior helps you recognize signs of illness or injury.
- Keep living areas clean and reduce stress by maintaining proper environmental conditions and handling animals appropriately.

10. Strive for Continuous Improvement

- Seek advice from knowledgeable and reputable sources to improve your skills.
- Review these practices regularly and identify areas for growth.

Important Contacts to Consider

1. **Veterinarian for medical care**

Name: _____

Phone Number: _____

2. **Feeding and nutrition advisor**

Name: _____

Phone Number: _____

3. **Animal handling advisor**

Name: _____

Phone Number: _____

4. **How will you cover project expenses (feed, housing, transportation, medical care)?**

Project Pictures

Poultry ID (leg band, wing band, etc) _____

Beginning Picture

Attach a picture of your project animal when it was purchased/obtained. If you are beginning with a group of birds, you can use a picture of the whole group.

Date of picture: _____ Date purchased/obtained: _____

Ending Picture

Attach a picture of your project animals taken the week before the county fair. If you began with a group of birds, you can use a picture of just the ones you plan to take to the fair.

Date of picture: _____ Date purchased/obtained: _____

Feed Tag

For all projects

Attach one of your feed tags here. Depending on your project, include a tag for each stage of development. If you used custom mixed feed, ask your feed processor to help you create a feed tag by listing ingredients and calculating nutritional values. Add additional pages if necessary.

Feed Receipt
For all projects

Depending on your project, include a feed receipt for each stage of development.

Determining Average Daily Gain

For market projects

The target weight for market poultry depends on the species and industry expectations. Check your county's project guidelines to find the required final weight for your bird. Then, determine how much weight your bird needs to gain each day to reach that goal. This is called the **average daily gain (ADG)**. You can calculate ADG using the following steps:

1. Proper Finished Weight - Beginning Weight = Required Gain

2. Required Gain / Days in Feeding Period = Required Average Daily Gain

Example: Suppose you have a market duck that weighs 0.44 lb at 7 days old. The target weight is 7 lb, and you have 45 days until the fair.

Step 1:

$$7\text{lbs} - .44\text{ lbs} = 6.56\text{ lbs}$$

Step 2:

$$6.56\text{ gain}/45\text{ days} = 0.15\text{ average daily gain}$$

Your Turn: Now calculate the ADG for your own bird(s):

Step 1:

$$\text{Final Weight} - \text{Starting Weight} = \text{Total Gain Needed}$$

Step 2:

$$\text{Total Gain} \div \text{Number of Days} = \text{Average Daily Gain}$$

Why ADG Matters

Average daily gain tells you how much weight your bird should gain each day while you are raising it. Daily gains may vary slightly, but over time your bird should stay close to this average. Tracking this helps you ensure your poultry will reach the proper weight by the time of the fair or market.

Weight Summary and Feed Efficiency

For market projects

While tracking your bird's growth and average daily gain (ADG) is important, it's also essential to consider how much feed is required to support that growth. Feed is often the largest expense when raising animals. **Feed efficiency** refers to how many pounds of feed are needed for each pound of weight gain.

At the end of your project, use your records to calculate both rate of gain and feed efficiency from the beginning to the end of the project. If you are raising more than one bird, you can also calculate an average for the group. Follow the steps below.

1. **Recalculate ADG:** At the conclusion of your project, determine ADG again using the starting and final weights of your bird.
2. **Determine Total Feed Used:** Refer to your feed expense records to find the total pounds of feed given to each bird.
 - If birds were fed together, divide the total feed amount by the number of birds to estimate per-bird consumption.
3. **Calculate Feed Efficiency:** Divide the total pounds of feed by the total weight gained.
 - For example, broiler chickens typically require about 2 to 2.5 pounds of feed for every 1 pound of weight gain.
4. **Find a Flock Average (if applicable):** Add the results for each bird and divide by the total number of birds to determine the average.

Beginning date of project:

Ending date of project:

Description and Animal ID	Ending weight A	Starting weight B	Total pounds gained (A-B) C	Total days on feed D	Actual overall ADG (C/D)	Total pounds of feed E	Feed efficiency (E/C)
<i>Cockeral, band 5</i>	<i>6.5 lb</i>	<i>0.32 lb</i>	<i>6.16</i>	<i>49</i>	<i>0.126</i>	<i>14</i>	<i>2.27 lbs</i>
				Flock Average:			

Equipment Inventory

For all projects

Use this record to list items you already own and will be using this year for this project.
Examples include cages, feeders, waters, grooming equipment, incubation and brooding equipment, etc

Date	Description	Value at beginning of project	Value at end of project
	Total value of inventory:	\$	\$

To calculate the value of inventory used, subtract the total value of inventory at the end of the project from the total value of the inventory at the beginning of the project.

Total value of inventory at beginning: \$ _____
 MINUS total value of inventory at end: \$ _____
 Equals Inventory used: \$ _____

Feed expenses

For all projects

Use this record to list all feeds and supplements fed to your project poultry for this year, even if they were provided to you by someone else (for example, your parents) for items provided to you by others, use an estimate of the fair market value. Examples include, pellets, supplements, treats, etc

Date	Type of feed	Pounds (lbs)	Cost
5/1/26	<i>Brand X, chick starter, medicated</i>	50 lbs	\$17.99
		Total Value of Feed	\$

If your project animals are housed together with other animals, you can track expenses using one of the following methods:

Option 1: If all the animals belong to you and you are responsible for their care and costs, record all expenses and income for the entire group and the housing area

Option 2: If you are only responsible for certain animals in the group, estimate and record the portion of expenses that applies to your project animals.

- For example, if there are 10 animals in the pen and 2 are yours, you would record 20% of the total feed cost.
- If you know how much feed your animals eat each week, you can also calculate the cost per pound and multiply it by the amount your animals consume.

This approach helps ensure your records accurately reflect the costs associated with your specific project animals.

Income from Project Animals

For all projects

If you plan to sell your market poultry, the exact profit or loss cannot be calculated until the animals are sold. However, you can estimate the potential income now using one of the methods below. Market prices can be found online or from local buyers.

Method 1: Based on Weight Estimated Sales Value = Weight (lbs) × Average Market Price (\$/lb)

Example: A tom turkey weighs 23 pounds, and the current average market price is \$1.09 per pound. $23 \times \$1.09 = \25.07

Method 2: Based on Number of Birds: Estimated Sales Value = Number of Animals × Average Market Price per Bird

Example: You have 20 Cornish Rock Cross broilers ready for market. The average market price per bird is \$10. $20 \times 10 = \$200$

Animal Identification	Weight or Head Count	Market Price per Pound or Head	Estimated Sales Value
		Total Estimated Sales Income:	\$

Value of Animals Used at Home

Record the approximate value of any project animal which will not be sold at home

Animal Identification	Estimated Sales Value
Total Estimated Value:	\$

Comments/Notes:

Profit or Loss Statement

For all projects

Complete the worksheet below using the totals for each section on the previous pages.

Income:

Miscellaneous Income	
Estimated Sales Income	
Value of animals used at home	
Total Income (add items above)	

Expenses:

Value of inventory used	
Value of birds at beginning of project	
Value of feed	
Value of supplies and other expenses	
Total Expenses (add items above)	

Project Profit or Loss

(Total Income - Total Expenses = Project Profit (if positive) or Project Loss (if negative))

Total Income (from above)	
Total Expenses (from above)	
Project Profit or Loss	

Feed Tag Questions

1. What is the main ingredient in this feed? _____
2. What is the crude protein level? _____
3. What is the crude fat level? _____
4. At what age should you start feeding this feed? _____
5. Who is the manufacturer of this feed? _____
6. What is LifeGuard? _____
7. What is the purpose of the product code? _____

Types of Combs

(ALL levels/projects complete this page)

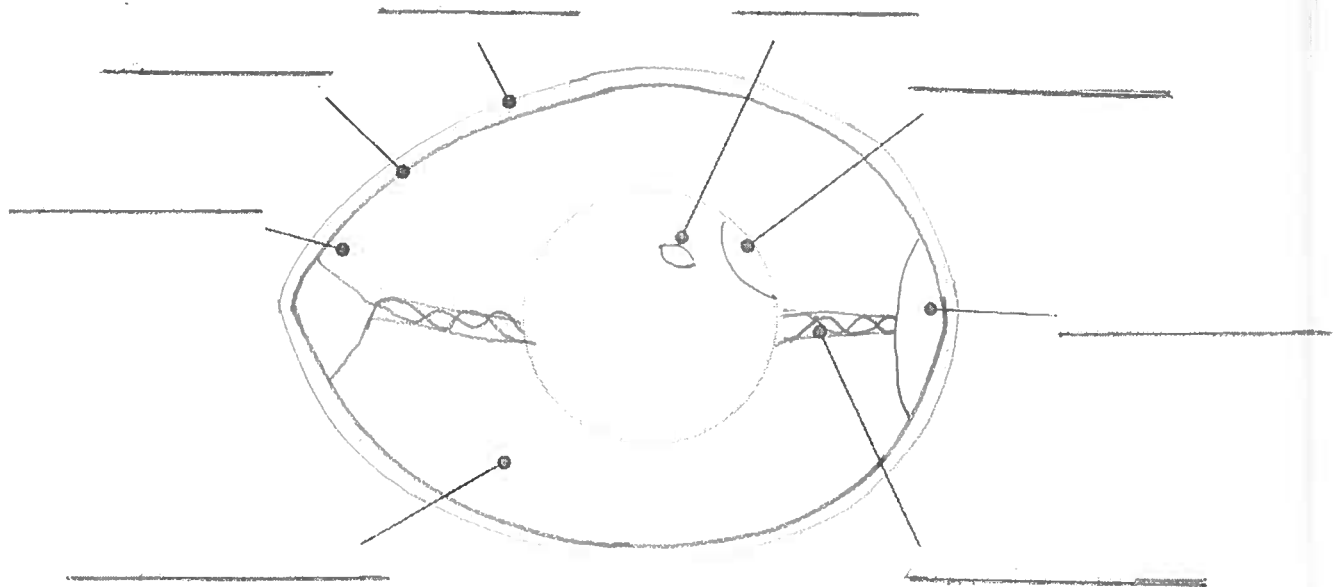


Word Bank

Buttercup
Cushion
Pea
Rose

Single
Strawberry
V-Shaped
Walnut

Parts of an Egg
(All projects/levels complete this page)



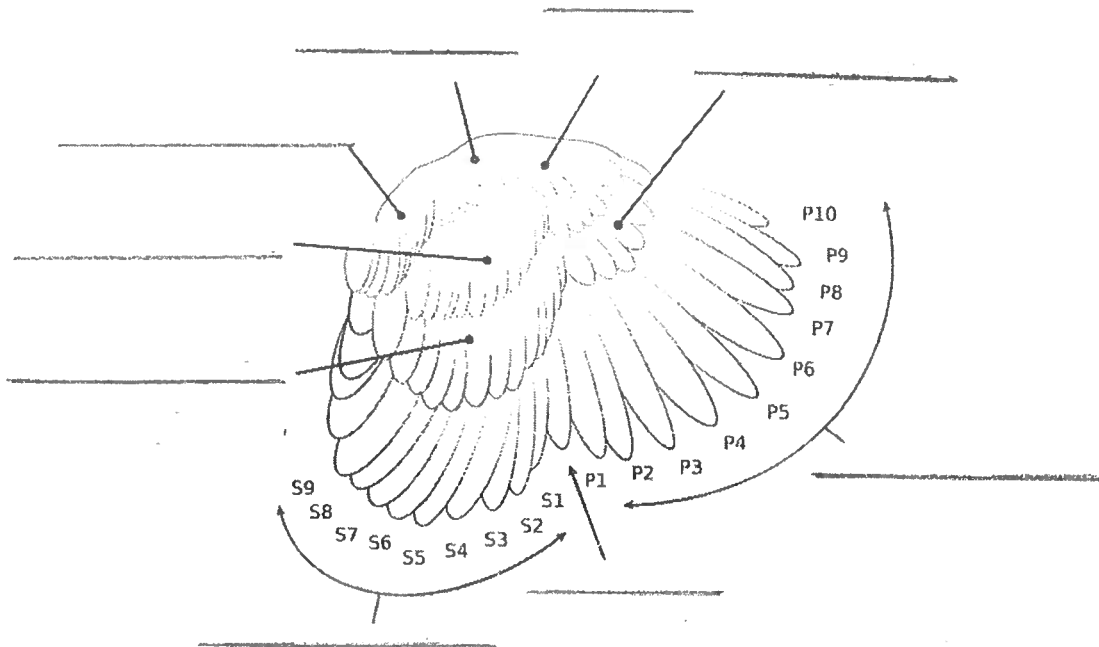
Word Bank

Air Cell
Albumen
Chalazae
Shell

Yolk
Inner Membrane
Outer Membrane
Vitelline Membrane

Parts of a Chicken Wing

(ALL levels complete is taking a Chicken project)

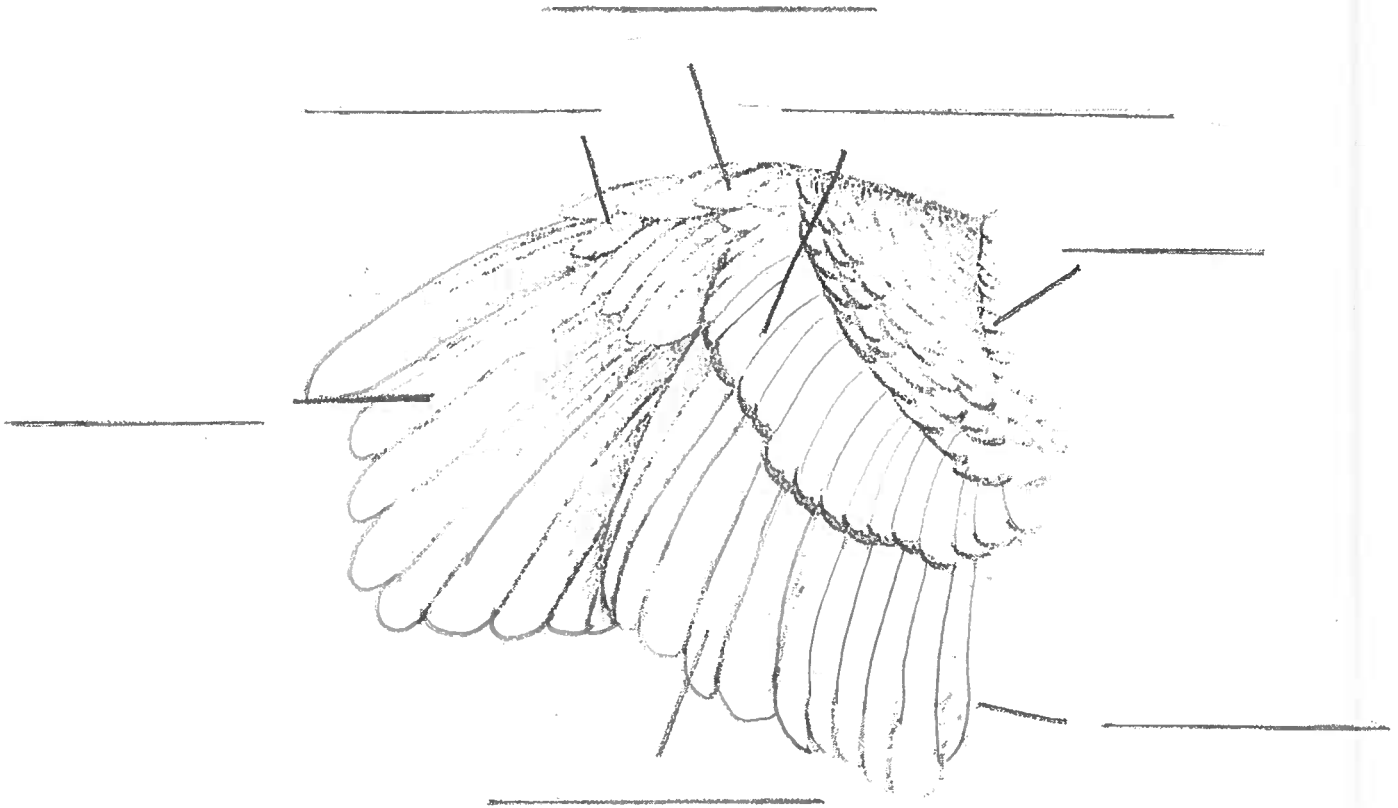


Word Bank

Alula
Axial Feather
Primaries
Secondaries

Front
Scapulars
Wing Bow
Wing Bar

Parts of a Turkey Wing
(ALL levels complete if taking a turkey project)

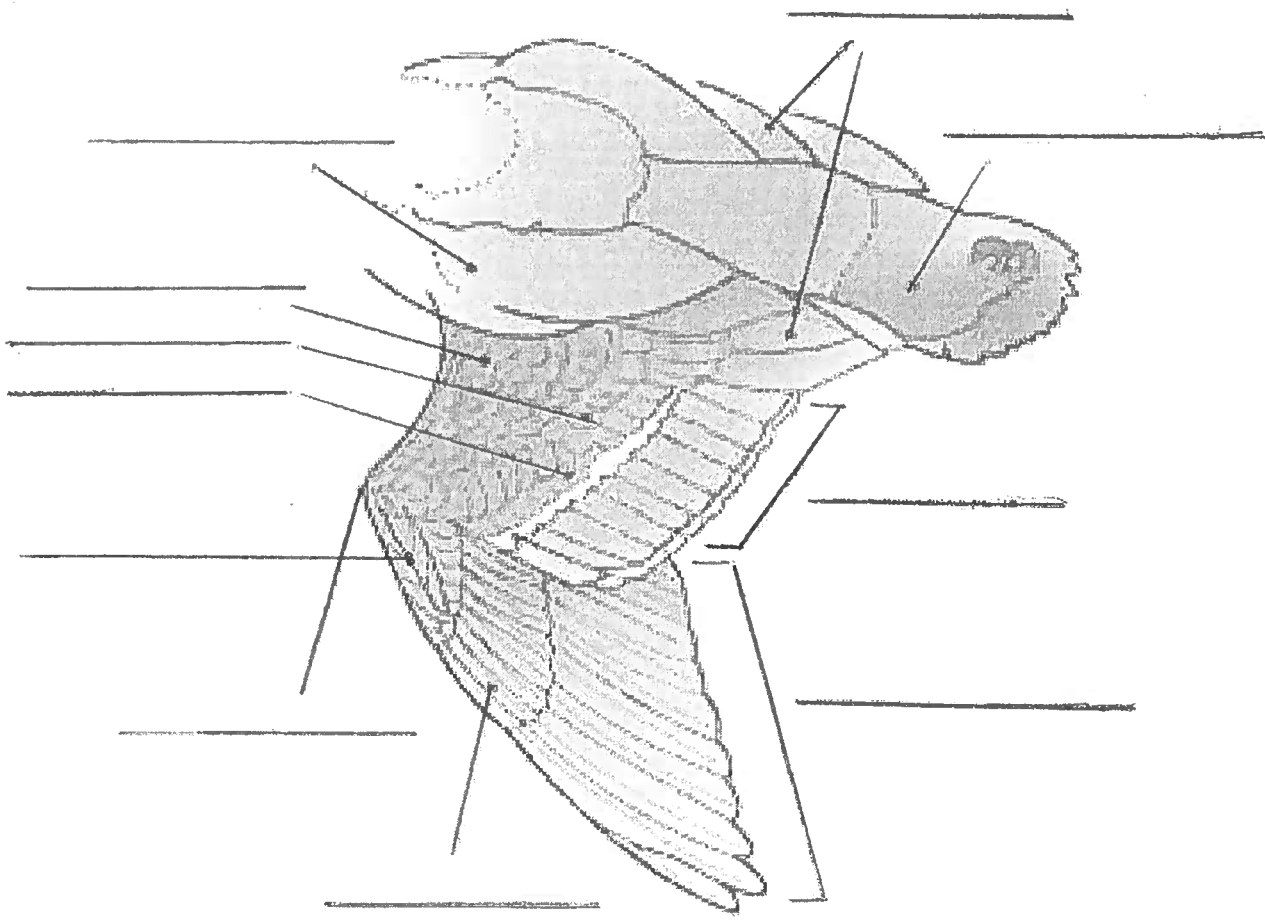


Word Bank

Alula
Scapulars
Tertials
Secondaries

Primaries
Primary Coverts
Secondary Coverts

Parts of a Duck Wing
 (All levels complete this if taking a DUCK project)



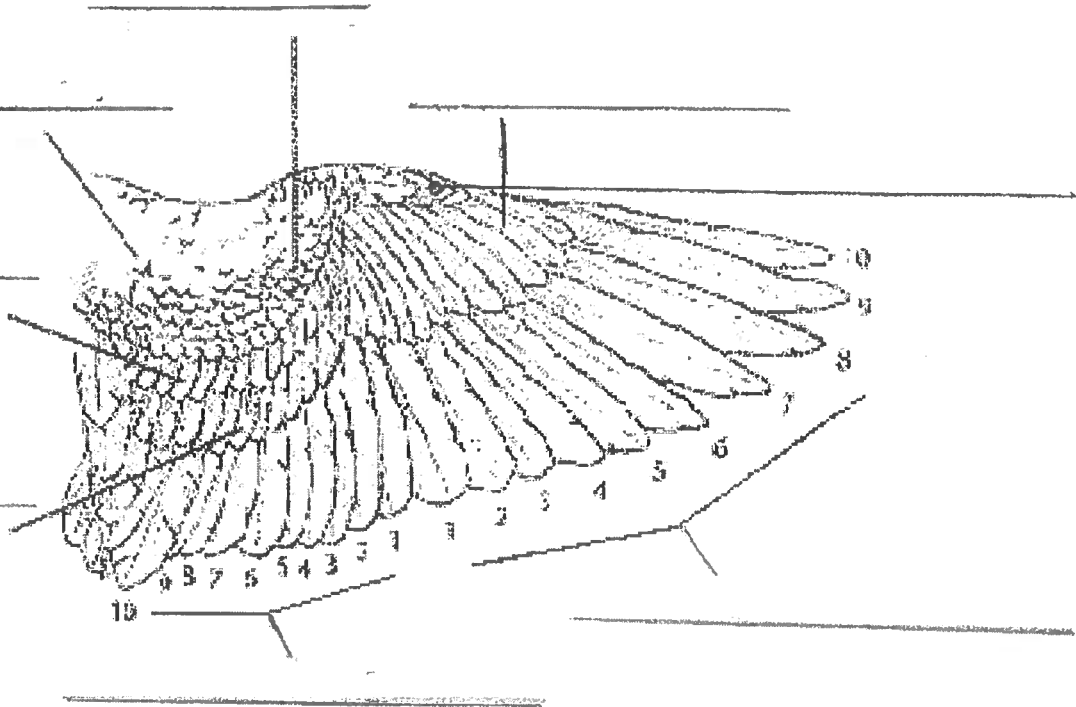
Muscles, joints, and feather all work together when a bird takes to the air. During flight, each feather type labeled above performs a specific duty to keep the bird aloft.

Word Bank

- | | |
|-------------------|-----------------|
| Primaries | Carpal Joint |
| Secondaries | Lesser Coverts |
| Tertials | Median Coverts |
| Scapulars | Greater Coverts |
| Uppertail Coverts | Primary Coverts |
| Alula | |

Parts of a Goose Wing

(ALL levels complete this if taking a Goose project)



Word Bank

Alula

Antebrachial Coverts

Major Coverts (2 places on diagram)

Primary Flights

Secondary Flights

Minor Coverts (2 places on diagram)

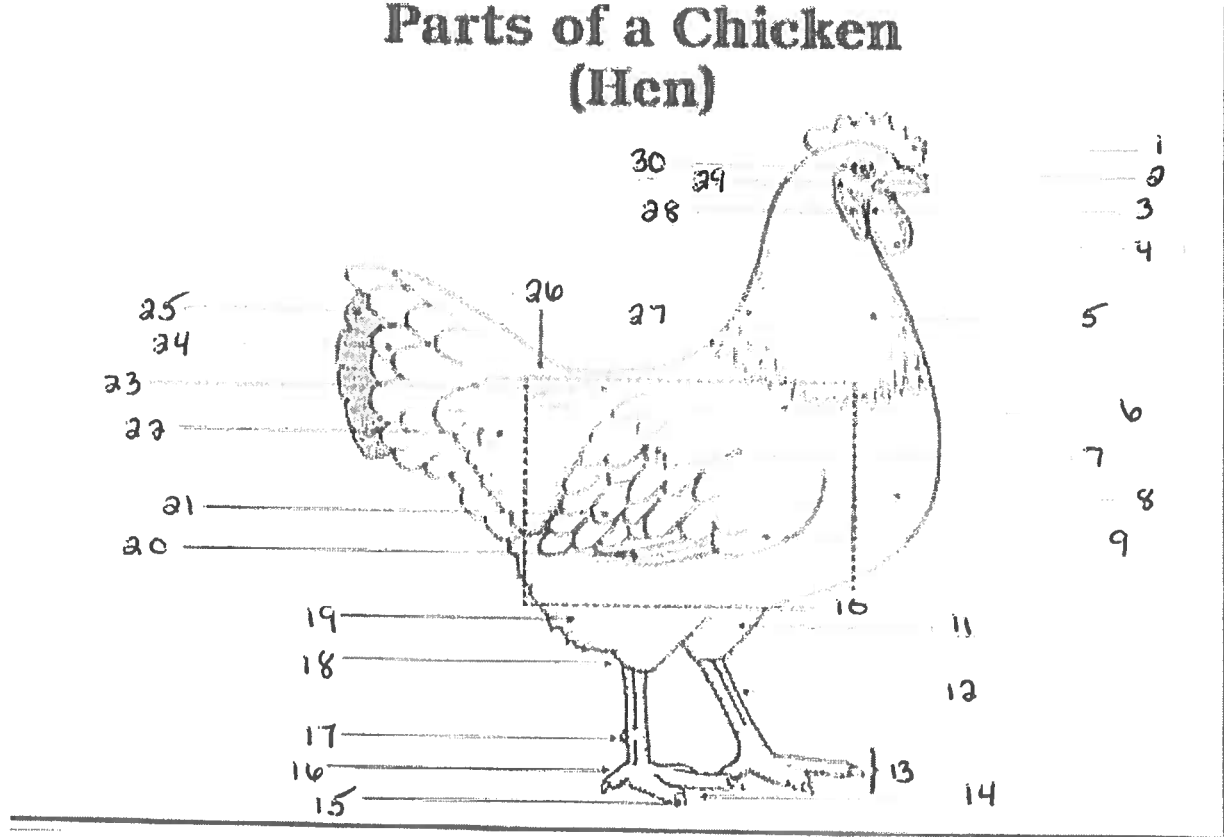
Parts of a Chicken (Hen)

(ALL levels complete this OR Parts of a Rooster if taking a Chicken project)

Word Bank (30)

Eye	Ear	Comb	Wattle	Beak	Throat	Cape
Fluff	Body	Spur	Hock	Toe	Toenail	Web
Foot	Thigh	Shank	Breast	Wing Bow	Wing Covert	Back
Shoulder	Primaries	Secondaries	Main Tail	Sweep of Back	Tail Coverts	
Neck Feathers	Ear Lobe		Cushion			

Parts of a Chicken (Hen)



Answer Blanks on Next Page

Parts of a HEN Answer Blanks

1. _____
2. _____
3. _____
4. _____
5. _____
6. _____
7. _____
8. _____
9. _____
10. _____
11. _____
12. _____
13. _____
14. _____
15. _____

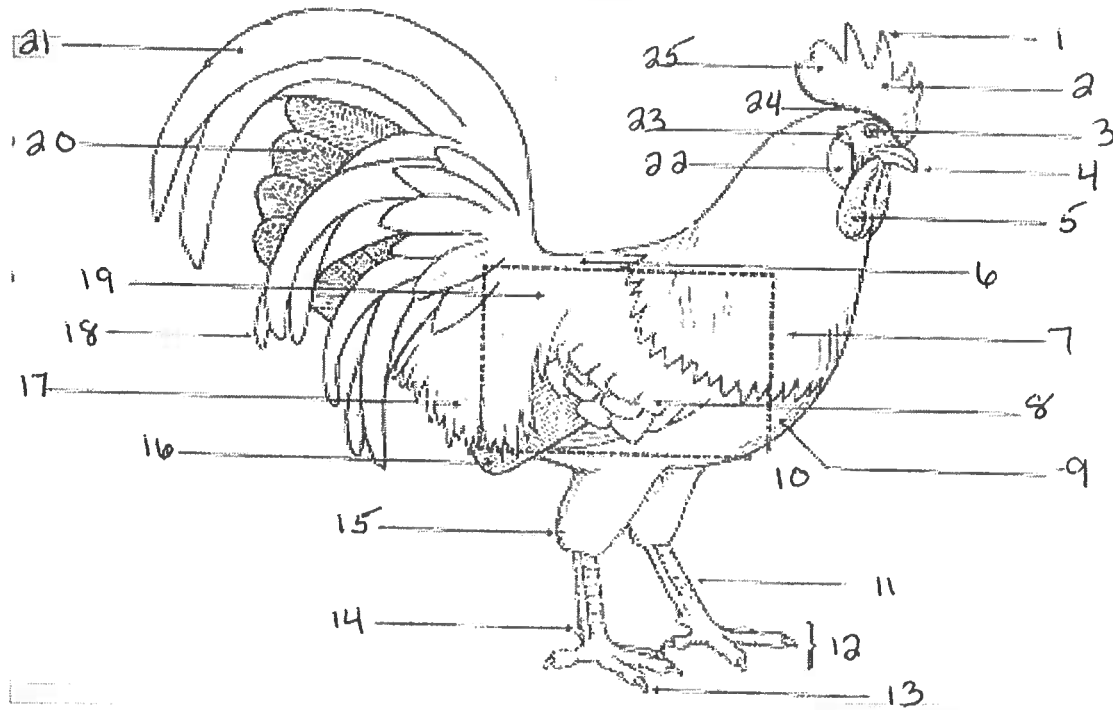
16. _____
17. _____
18. _____
19. _____
20. _____
21. _____
22. _____
23. _____
24. _____
25. _____
26. _____
27. _____
28. _____
29. _____
30. _____

Parts of a Rooster/ Cockerel

(ALL levels complete this OR Parts of a Hen if taking a Chicken project)

Word Bank (25)

Eye	Ear	Comb	Wattle	Beak	Hackle	Sickles
Fluff	Body	Spur	Hock	Claw	Blade	Base
Foot	Point	Shank	Breast	Wing Bow	Saddle Back Cape	
Ear Lobe	Primaries	Main Tail	Saddle Feathers		Lesser Sickles	



1. _____
2. _____
3. _____
4. _____
5. _____
6. _____
7. _____
8. _____
9. _____
10. _____
11. _____
12. _____
13. _____

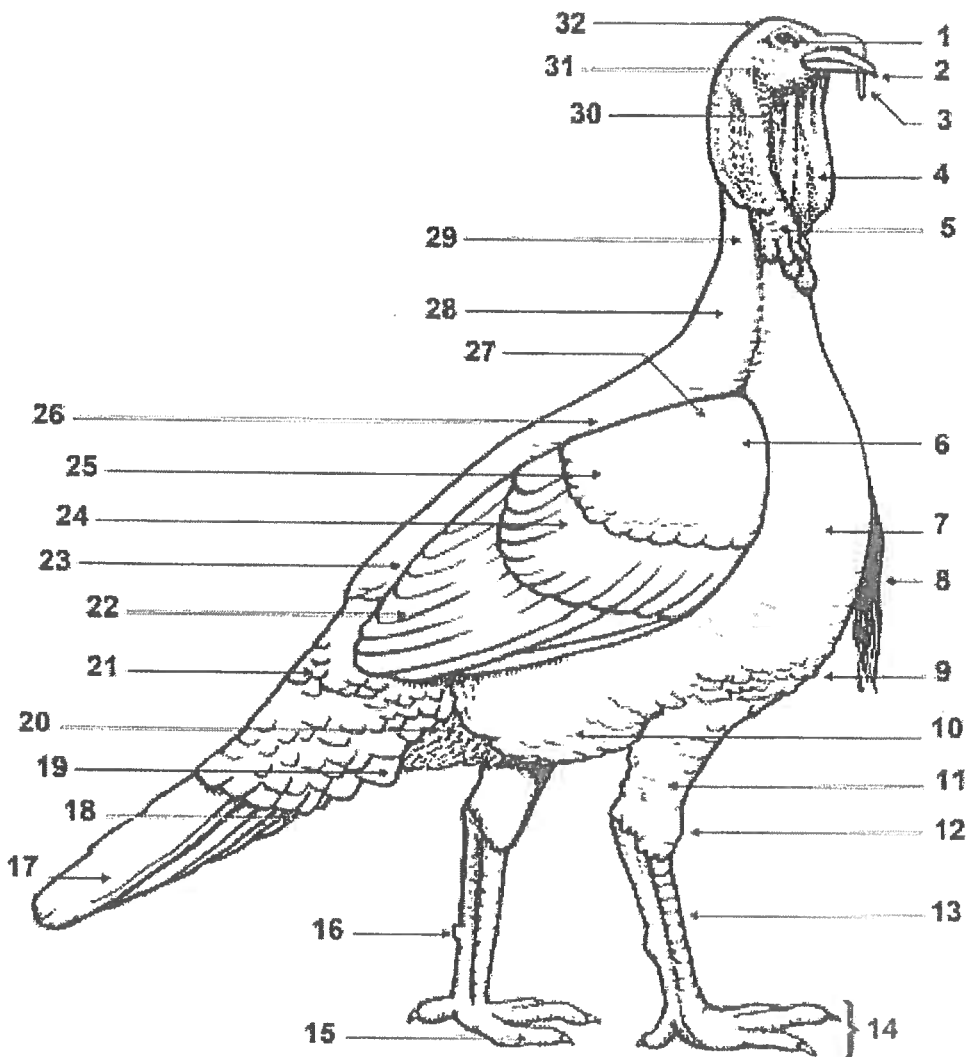
14. _____
15. _____
16. _____
17. _____
18. _____
19. _____
20. _____
21. _____
22. _____
23. _____
24. _____
25. _____

Parts of a Turkey

(ALL levels complete if taking a Turkey project)

Word Bank (32)

Head	Eye	Ear	Beak	Head	Snood	Wattle
Caruncles	Throat	Shoulder	Neck	Cape	Spur	Toe
Shank	Hock	Leg	Foot	Breast	Beard	Tail
Wing Front	Back	Saddle	Wing Bow	Wing Bar	Tail Coverts	Fluff
Keel	Thigh Feathers		Secondaries		Under Tail Coverts	



Answer blanks on next page

Parts of a Turkey Answer Blanks

1. _____
2. _____
3. _____
4. _____
5. _____
6. _____
7. _____
8. _____
9. _____
10. _____
11. _____
12. _____
13. _____
14. _____
15. _____
16. _____

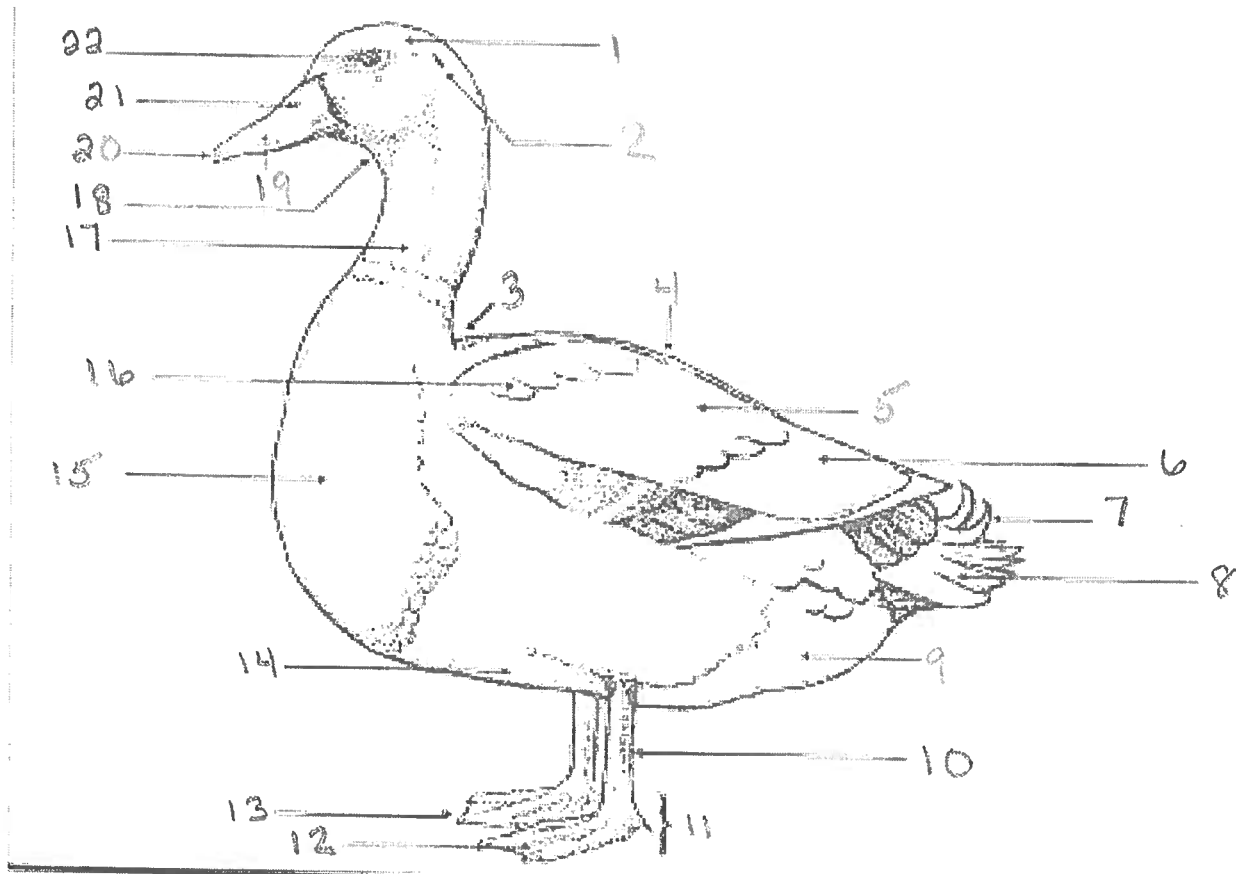
17. _____
18. _____
19. _____
20. _____
21. _____
22. _____
23. _____
24. _____
25. _____
26. _____
27. _____
28. _____
29. _____
30. _____
31. _____
32. _____

Parts of a Duck

(ALL levels complete if taking a Duck project)

Word Bank (22)

Eye	Ear	Nostril	Bill	Bean	Throat	Neck
Foot	Toe	Web	Fluff	Shank	Keel	Tail
Primaries	Secondaries	Saddle	Breast	Cape	Wing Bow	Head
Drake Feather						



1. _____
2. _____
3. _____
4. _____
5. _____
6. _____
7. _____
8. _____
9. _____
10. _____
11. _____

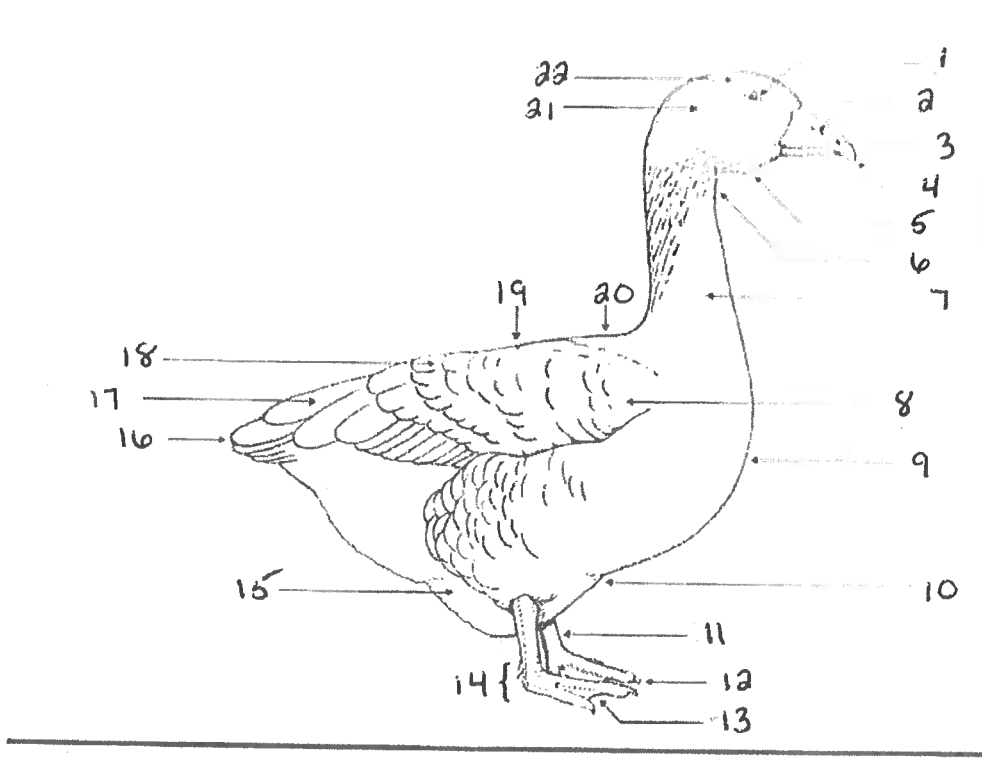
12. _____
13. _____
14. _____
15. _____
16. _____
17. _____
18. _____
19. _____
20. _____
21. _____
22. _____

Parts of a Goose

(ALL levels complete if taking a Goose project)

Word Bank (22)

- | | | | | | | |
|---------------|-----------|-------|------|---------|----------|--------|
| Cape | Saddle | Head | Ear | Nostril | Bean | Web |
| Dewlap | Shank | Bill | Eye | Neck | Breast | Keel |
| Secondaries | Primaries | Fluff | Foot | Toe | Wing Bow | Throat |
| Tail Feathers | | | | | | |

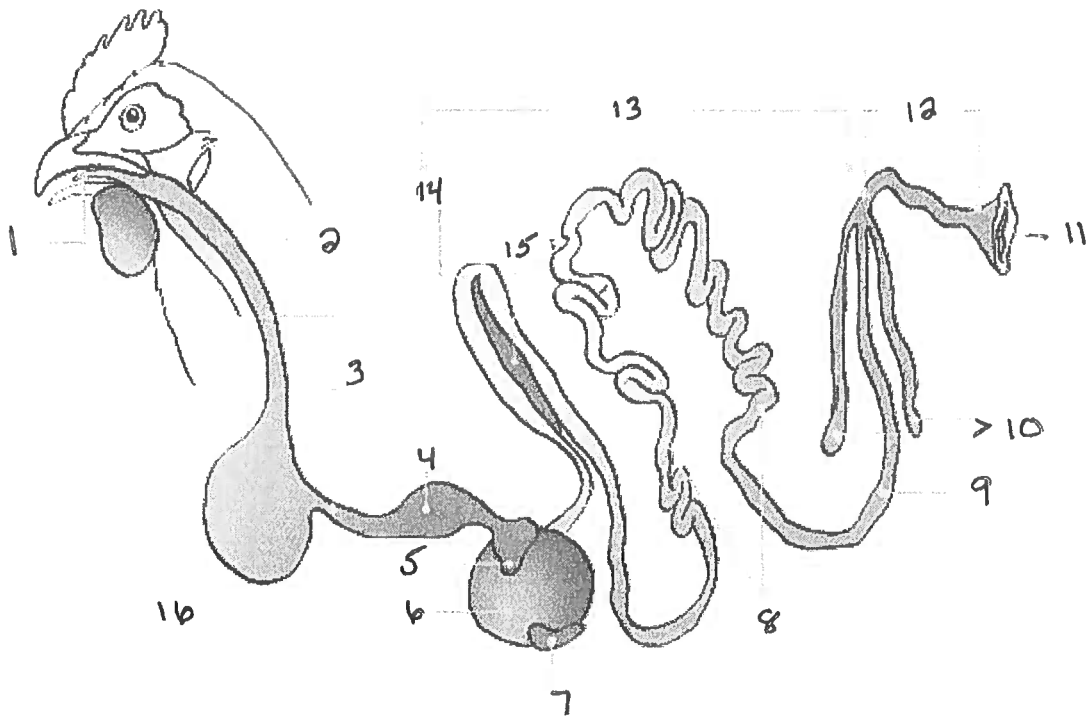


1. _____
2. _____
3. _____
4. _____
5. _____
6. _____
7. _____
8. _____
9. _____
10. _____
11. _____

12. _____
13. _____
14. _____
15. _____
16. _____
17. _____
18. _____
19. _____
20. _____
21. _____
22. _____

The Digestive System

(Intermediates and Seniors complete)

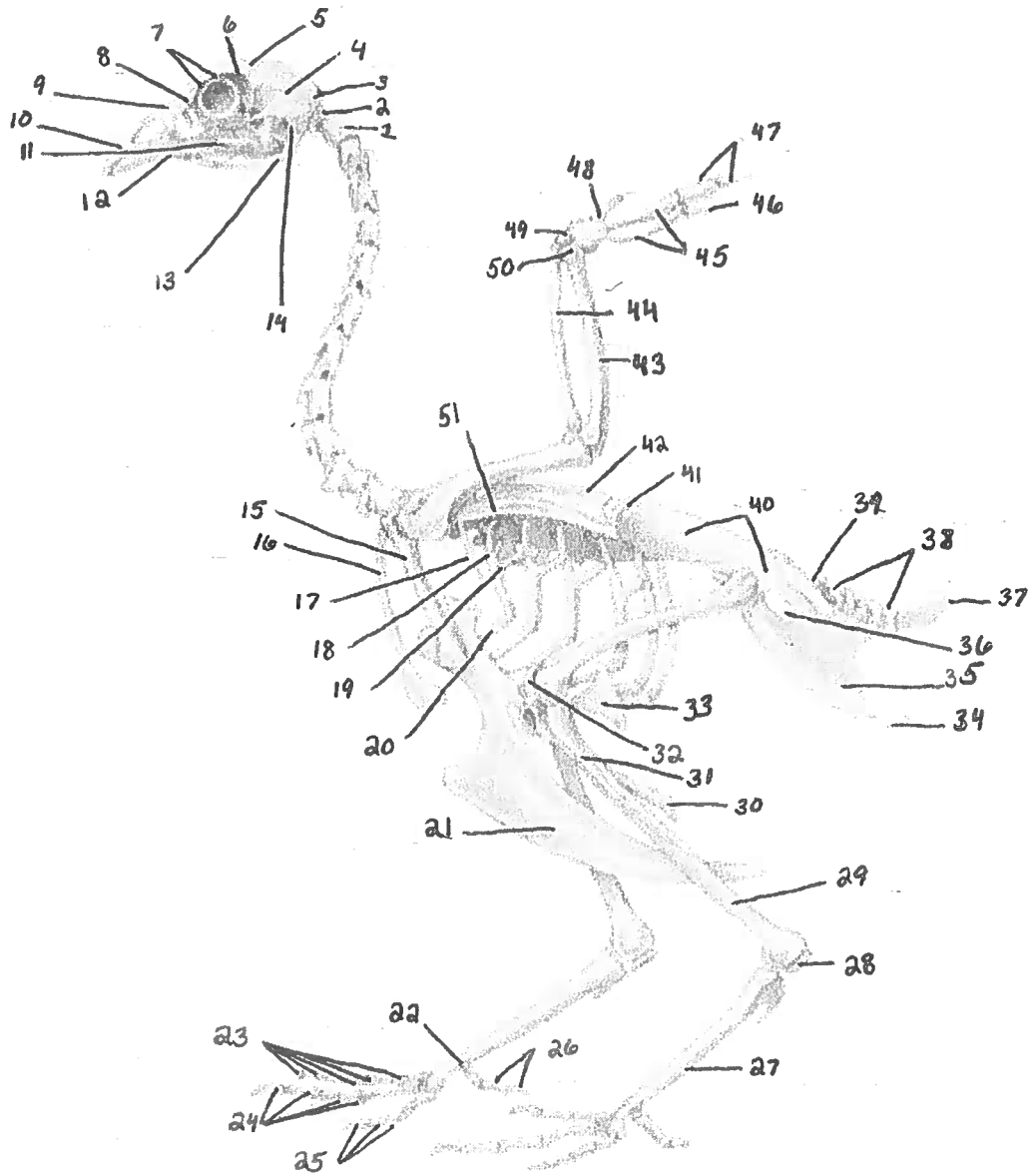


1. _____
2. _____
3. _____
4. _____
5. _____
6. _____
7. _____
8. _____

9. _____
10. _____
11. _____
12. _____
13. _____
14. _____
15. _____
16. _____

The Skeletal System

(Seniors complete)



Axis	Metatarsus	2nd Vertebral Rib	Patella
1st Sternal Rib	Obturator Foramen	Radius	Ulna
Ulnar Carpal Bone	Temporal Bone	Tibia	Pubis
Metacarpal Bones	Keel of Sternum	Occipital Bone	Pygostyle
Zygomatic Bone	Coracoid	Scapula	Mandible
Notarium	Frontal Bone	Atlas	Uncinate Process
Ilium	Furcula (Wishbone)	Orbit	Floating Rib
Hyoid Apparatus	Nasal Bone	Radial Carpal Bone	Ischium
Lacrimal Bone	Premaxilla	1st Metatarsal Bone	Scleral Bones
Fibula	Free Caudal Vertebrae	Hypotarsal Sesamoid Bone	6th Thoracic Vertebrae
Thoracic Process of Sternum	Single Phalanx of 3rd (Minor) Digit	External Acoustic Meatus	4 Phalanges of 3rd Digit
5 Phalanges of 4th Digit	3 Phalanges of 2nd Digit	2 Phalanges of 1st Digit	2 Phalanges of 1st (Alular) Digit
2 Phalanges of 2nd (Major) Digit	Caudal End of Synsacrum	Caudal Lateral Process of Sternum	

- | | | | |
|-----------|-----------|-----------|-----------|
| 1. _____ | 14. _____ | 27. _____ | 40. _____ |
| 2. _____ | 15. _____ | 28. _____ | 41. _____ |
| 3. _____ | 16. _____ | 29. _____ | 42. _____ |
| 4. _____ | 17. _____ | 30. _____ | 43. _____ |
| 5. _____ | 18. _____ | 31. _____ | 44. _____ |
| 6. _____ | 19. _____ | 32. _____ | 45. _____ |
| 7. _____ | 20. _____ | 33. _____ | 46. _____ |
| 8. _____ | 21. _____ | 34. _____ | 47. _____ |
| 9. _____ | 22. _____ | 35. _____ | 48. _____ |
| 10. _____ | 23. _____ | 36. _____ | 49. _____ |
| 11. _____ | 24. _____ | 37. _____ | 50. _____ |
| 12. _____ | 25. _____ | 38. _____ | 51. _____ |
| 13. _____ | 26. _____ | 39. _____ | |

Junior Questions and Activities
ALL Juniors complete this section

1. How many total toes does a Silkie chicken have? _____

2. Which is older, a hen or a pullet? _____

3. What is the incubation period for chickens? Ducks? Turkeys? Geese?

4. What is the most important nutrient? _____

5. What are two external parasites? What are two internal parasites?

6. What does NPIP stand for? _____

7. What is a male turkey called? What is a female called?

8. Define and explain biosecurity.

9. How do you know if your chicks are too hot? Too cold?

10. What is the purpose of the gizzard?

Poultry Word Search ALL levels complete

P N L S G J W A R F Z C L A J K Q O W V
L Z I C I O L D E N G L I S H K C J B Z
Y G H A O C L N X K S P O G F X D U B B
M C M A C R I D U B D I O F P U L M Z R
O O R M R F N L E S A N L L G K M U O A
U C R O A L F I I N R D K K I G T S Q H
T H A H N L E Y S A G R V O I S W C S M
H I U T O E L Q L H N L O V I E H O W A
R N S U Y D S A U U V B I H D L C V E C
O R T R X X E U R I X O U S P M M Y D A
C N R K W B L I S D N F R T H X Q A I Y
K R A E E G M B S S X T S P T G T I S U
P O L Y L D L I U L E A Y E I E A Q H G
E U O E S U E E N C A X X B B N R M J A
K E R Z U C N L G O K N L O F R G C E X
I N P G M H J Q A H R E D N U D I T U F
N R M E M S O O X W O C Y R R P G G O P
D Z S V E L S H F B A R A E E Y Y S H N
N I Z G R U T B J E R R N E F D S P O T
K Q R G D K Q D L B H Z E X O Y X Y J S

sicilian buttercup	rhode island red	old english game
plymouth rock	oldenglish	australorp
welsummer	harlequin	orpington
buckeye	sebright	mallard
muscovy	leghorn	minorca
delaware	cornish	polish
swedish	silkie	brahma
sussex	turkey	cochin
cayuga	rouen	pekin

Intermediate Questions and Activities
Intermediates complete this and ALL Junior sections

1. How do chickens cool themselves off?

2. What duck breed has an abnormal incubation period? How many days?

3. What chicken disease causes tumors and is a form of cancer in chickens?

4. How many turkey classes are there? _____

5. What is imprinting?

6. In the United States, where is the national poultry show held? What is it called?

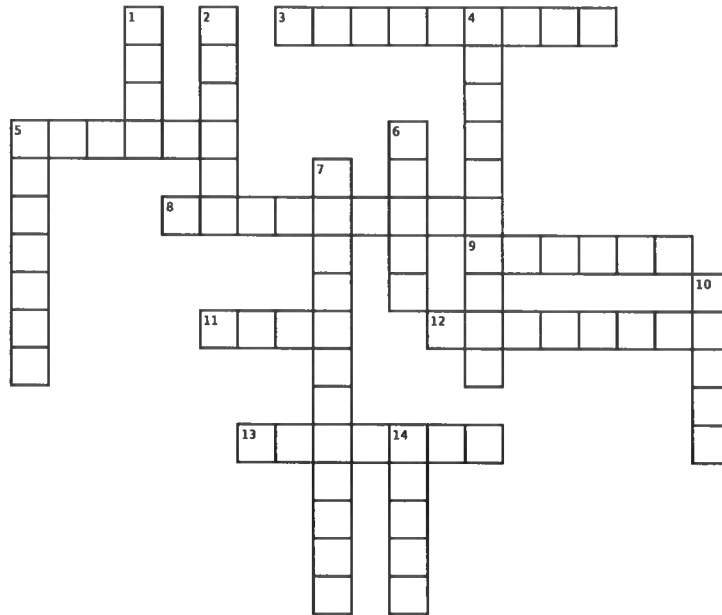
7. What is HPAI? _____

8. What is the keel? _____

9. What are the four grades of egg shells? _____

10. What does "bleaching" mean relative to chickens?

Crossword - Intermediate and Seniors



Down:

1. another general name for poultry
2. what a collection of eggs is called
4. bacterial infection that causes a painful lesion on the bottom the footpad
5. when a chick makes the first hole in its egg while hatching
6. color of a silkie's skin
7. this breed is most often raised for meat (what your broilers are)
10. this part (feather type) is found just above the vent
14. number of recognized turkey varieties

Across:

3. deformity where the upper and lower mandibles do not align
5. a young female chicken that hasn't started laying yet
8. color of a Marans eggs
9. where Marans originated
11. disease commonly known as the bird flu
12. a young male chicken
13. only recognized breed created by a woman

Senior Questions and Activities

Seniors complete this and ALL Intermediate AND Junior sections

1. What is the most popular preventative for Coccidiosis for unvaccinated chicks?

2. Once infected, what medication is used to treat Coccidiosis? _____
3. What is the chicken's true stomach called? _____
4. What are two serious diseases that turkeys become susceptible to when raised on ground where chickens have been raised in the past 3 years?

5. What is the uropygial gland, and where is it located?

6. What is a Heritage breed?

7. What are the turkey varieties?

8. What birds have a vaulted skull? What does this mean?

9. Why do you measure the flexibility of the pubic bones?

10. What are 3 ways to sex a duck?

Trivia
(Seniors complete)

1. Can hens crow?
2. Cochins are a _____ breed. (country of origin)
3. Which Breed of duck is in the heavy class? (a. Muscovy b. Call c. Runner d. Cayuga)
4. What is the record for the number of yolks found in 1 egg?
5. An egg is strongest _____. (a. At its ends b. In the middle of it's long sides c. All the parts are the same)
6. The most eggs laid by 1 chicken in 1 day is ___ eggs.
7. Define Chalazae.
8. How much does a bantam weigh compared to it's large counter-part?
9. True or False: An ornithologist is a person who studies birds.
10. What do birds eat to help grind up their food?
11. What are the 4 varieties of Naked necks?
12. Name 7 varieties of Sussex bantams.
13. Houdans are named after Houdan, _____. (country)
14. Sebrights are named after _____ (person)
15. What does A.B.A. stand for?
16. What does A.P.A. stand for?
17. What is the function of the gizzard?
18. Name 1 rumpless breed of chicken.
19. What does N.P.I.P. stand for?
20. Which 2 diseases do most shows require a negative blood test result, prior to showing?

Project Summary

For all projects

Please complete a project summary (at least 1 paragraph) and include the following information:

- What was your favorite part of this project? Why?
- What was your least favorite part? Why?
- What was the most important thing that you learned? Why?
- What was the most interesting thing that you learned? Why?